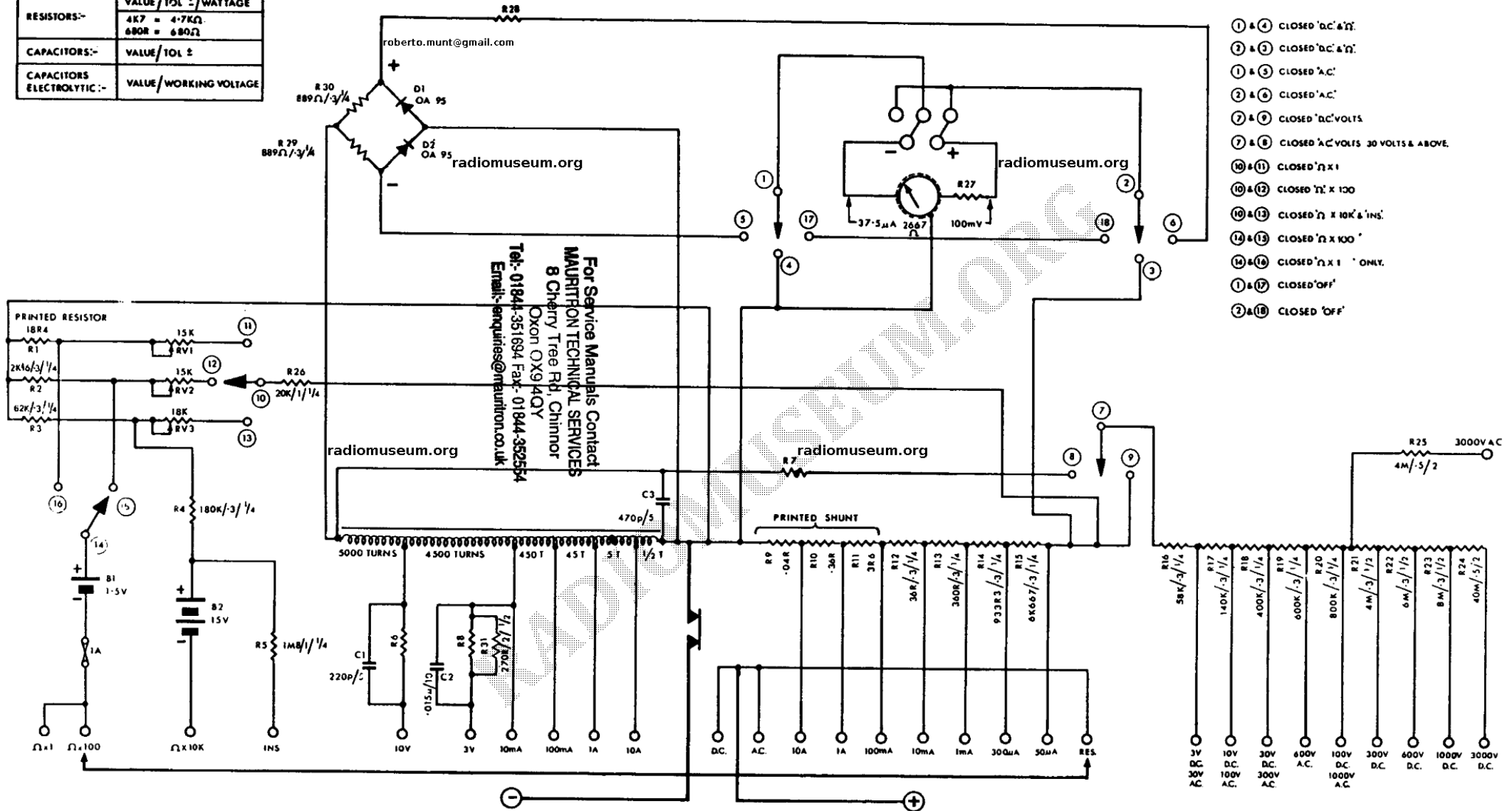


CIRCUIT REFERENCE CODING	
RESISTORS:-	VALUE / TOL ± / WATTAGE
	4K7 = 4.7KΩ
	680R = 680Ω
CAPACITORS:-	VALUE / TOL ±
	VALUE / WORKING VOLTAGE



- ① & ④ CLOSED 'D.C.' & 'A.C.'
- ② & ② CLOSED 'D.C.' & 'A.C.'
- ① & ③ CLOSED 'A.C.'
- ② & ⑥ CLOSED 'A.C.'
- ⑦ & ⑦ CLOSED 'D.C.' VOLTS
- ⑦ & ⑧ CLOSED 'A.C.' VOLTS 30 VOLTS & ABOVE.
- ⑩ & ⑩ CLOSED 'Ω' X 1
- ⑩ & ⑫ CLOSED 'Ω' X 100
- ⑩ & ⑬ CLOSED 'Ω' X 10K & 'INS.'
- ⑬ & ⑬ CLOSED 'Ω' X 100'
- ⑭ & ⑭ CLOSED 'Ω' X 1 ' ONLY.
- ① & ⑰ CLOSED 'OFF'
- ③ & ⑱ CLOSED 'OFF'

For Service Manuals Contact  
**MAURITON TECHNICAL SERVICES**  
 8 Cherry Tree Rd, Chinnor  
 Oxon OX9 4QY  
 Tel:- 01844-351694 Fax:- 01844-352554  
 Email:- enquiries@mauriton.co.uk

ADJUST R6 Δ 7K  
 ON R7 Δ 500R  
 CALIBRATION R8 Δ 5K  
 R28 Δ 5K